

AGENDA ITEM B4: ECONOMIC DEVELOPMENT
BOARD RULE 400.0400.00
ENROLLMENT AND COMPLETION RATES
BOARD OF TRUSTEES MEETING: AUGUST 22, 2013

The Workforce and Economic Development (WF/ED) Department at Belmont College develops and provides credit and non-credit courses, training, and seminars in response to the needs of community members living in the three-county service area, as well as to the needs of business and industry. Educational offerings are monitored by staff and administrators in the department, and evaluation of courses and trainings is moving toward assessment models adopted for academic courses and programs. For this report, headcounts and completions for the 2012/2013 have been assessed and four-year trends for enrollments and completions are provided.

Presentation of Data

Table 1, *Enrollments and Completions in credit and non-credit courses, 2009/2010 through 2012/2013*

	2009/2010		2010/2011		2011/2012		2012/2013	
	Enrollment	Completions	Enrollment	Completions	Enrollment	Completions	Enrollment	Completions
Credit	358	303	524	439	465	383	898	797
Non-credit	1,028	920	1,463	1,463	1,400	1,392	753	735

Chart 1, *Completion rates in credit and non-credit courses, 2009/2010 through 2012/2013*

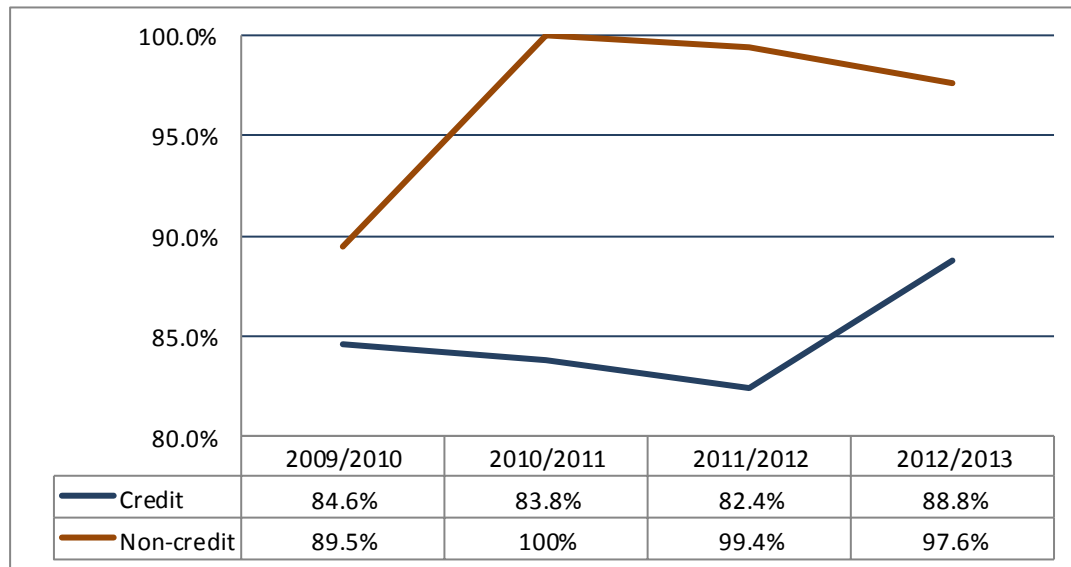
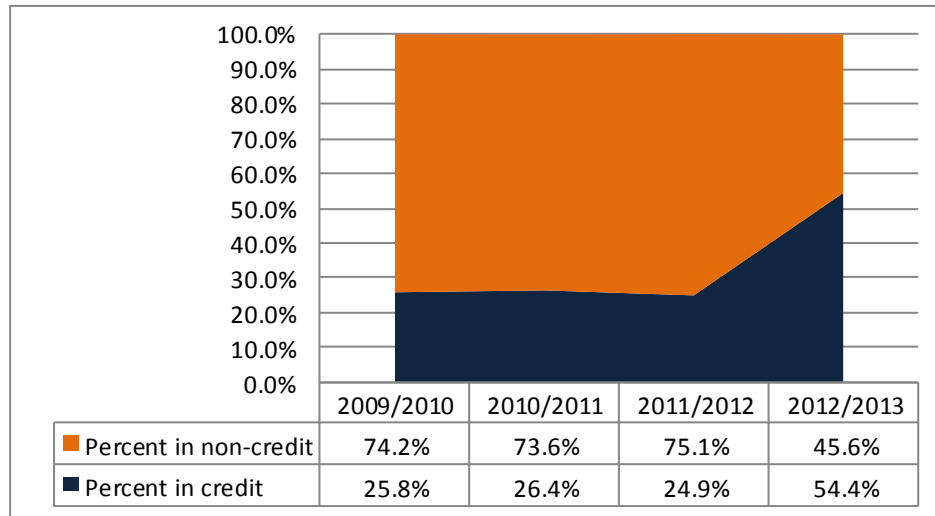


Chart 2, *Percent of WF/ED enrollment in credit courses, 2009/2010 through 2012/2013*



Data Highlights

1. Data in the first table show that enrollments and completions in credit courses have increased over the past four years. Since 2009/2010, enrollments in credit courses increased by 150% (from 358 to 898) and completions in credit courses increased by 163% (from 303 to 797).
2. Chart 1 shows the trends in completion rates for credit and non-credit courses. Completion rates in non-credit courses are generally higher than completions rates in credit courses. In non-credit offerings, completion is generally based on attendance rather than on demonstration of course outcomes.
3. The increase in completion rates for credit courses also can be seen in the first chart. Completion rates in credit courses increased from 82.4% in 2011/2012 to 88.8% in 2012/2013. This year 797 of the 898 individuals who enrolled in credit courses, completed the courses successfully.
4. The pattern of enrollments for WF/ED courses has changed since 2009/2010. In the 2012/2013 year there were more enrollments in credit courses than in non-credit. The percent of enrollments in credit courses has increased from 25.8% in 2009/2010 to 54.4% in 2012/2013.

Recommendations and Targets for Improvement

1. Maintain the 97.6% completion rate for non-credit offerings in 2013/2014, and increase the completion level in credit courses to 90% by July 2014.
2. Increase enrollment in non-credit offerings by developing and promoting courses designed to address immediate high-demand workforce market-driven employer needs. Suggested areas to include are: CDL, Pharmacy Technician, Welding, IV Therapy, Phlebotomy, CEU training, and Leadership/Supervision.
3. Expand credit offerings to meet employer needs in STNA, Welding, and Entrepreneurship.