

AGENDA ITEM B3: ACCESS TO HIGHER EDUCATION
BOARD RULE 400.0000.00
FALL ENROLLMENT STATISTICS
BOARD OF TRUSTEES MEETING: OCTOBER 24, 2013

This report displays data for headcount and credit hours in charts and tables. The first two charts show enrollment trends by headcount. Chart I and Chart II display trends over a ten-year period, from Fall quarter 2004 through Fall semester 2013.

Headcount enrollment trend charts are followed by a credit hour trend chart (Chart III) and an FTE trend chart (Chart IV). Additional charts in the report drill down to examine demographic variables in the student population.

Chart I, *Fall enrollment trend, headcount fall quarter 2004 through fall semester 2013*

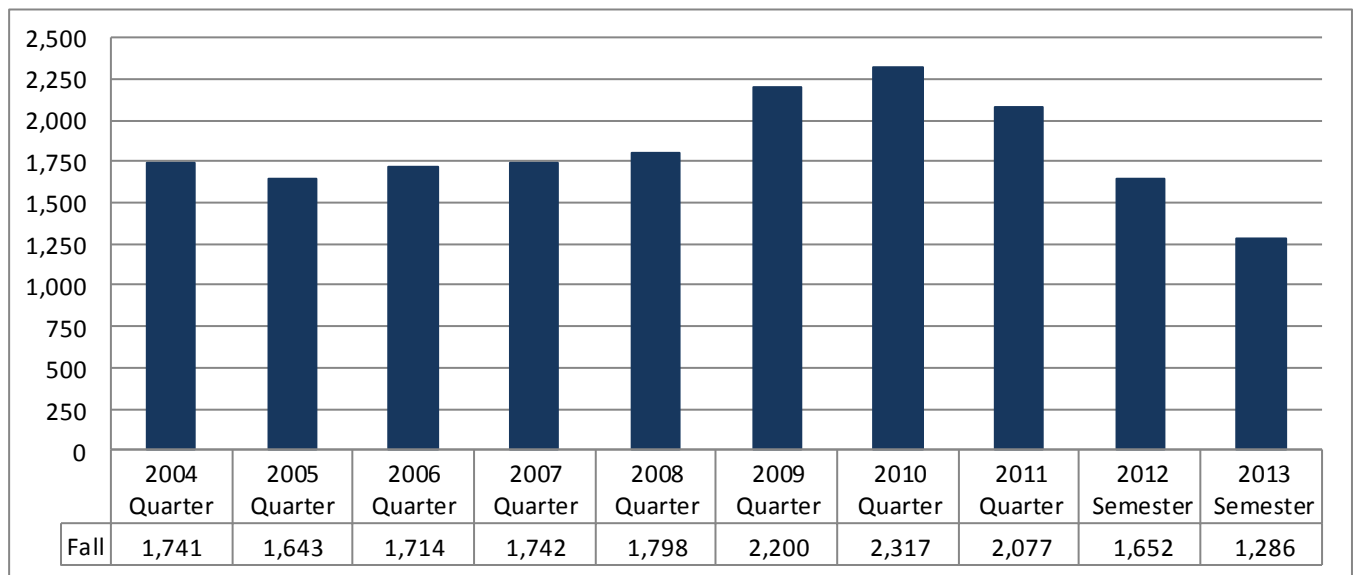


Chart II, *Headcount trends compared to previous fall*

Fall Term	Headcount	Difference compared to previous fall	Percent change
2004 Quarter	1,741		
2005 Quarter	1,643	-98	-5.63%
2006 Quarter	1,714	71	4.32%
2007 Quarter	1,742	28	1.63%
2008 Quarter	1,798	56	3.21%
2009 Quarter	2,200	402	22.36%
2010 Quarter	2,317	117	5.32%
2011 Quarter	2,077	-240	-10.36%
2012 Semester	1,652	-425	-20.46%
2013 Semester	1,286	-366	-22.15%

- These charts show the 22.15% decline in headcount from Fall 2012 to Fall 2013.

Chart III, *Fall enrollment trend, credit hours fall quarter 2004 through fall semester 2013*

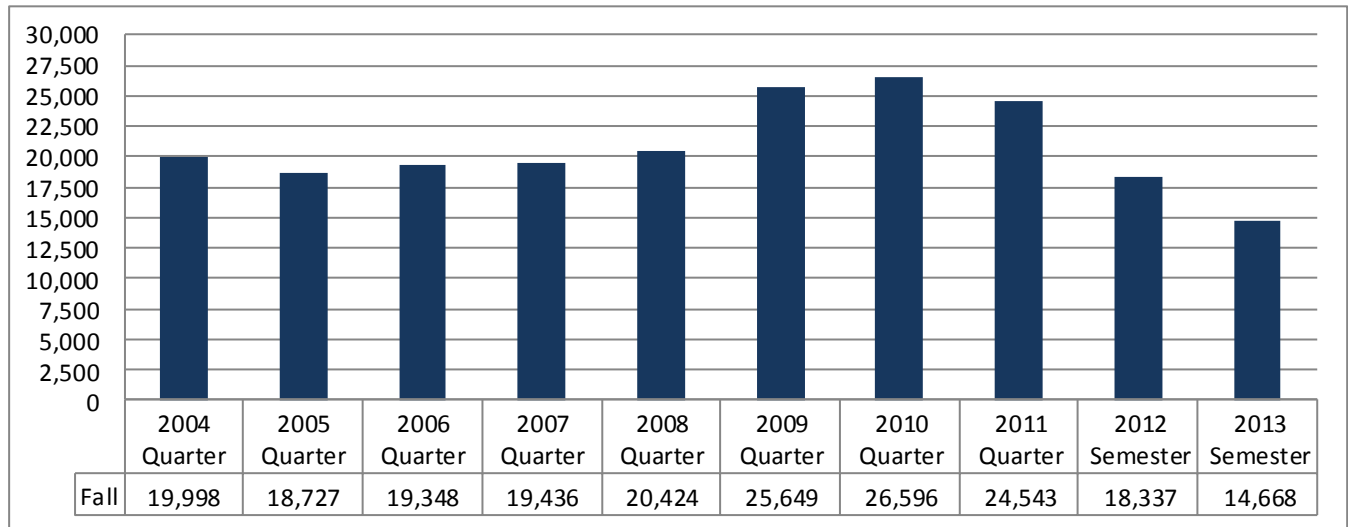
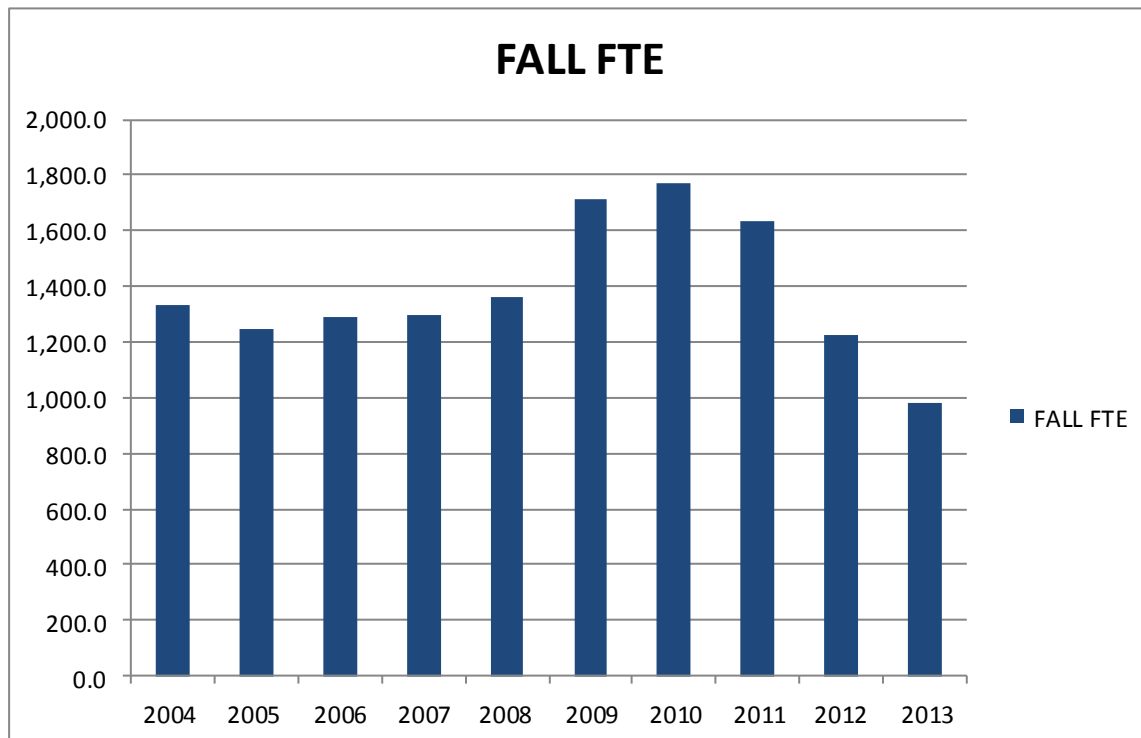


Chart IV, *Fall full-time equivalent history: fall quarter 2004 through fall semester 2013*



- The decline in credit hours of enrollment from Fall 2012 to Fall 2013 was 20%.
- One FTE is equal to 15 credit hours of enrollment. In Fall 2012, there were 1220.47 FTEs of enrollment; in Fall 2013, there are 977.87 FTEs. The decrease in FTEs is 20%.
- The decrease in headcount was 2% greater than the decrease in credit hours.

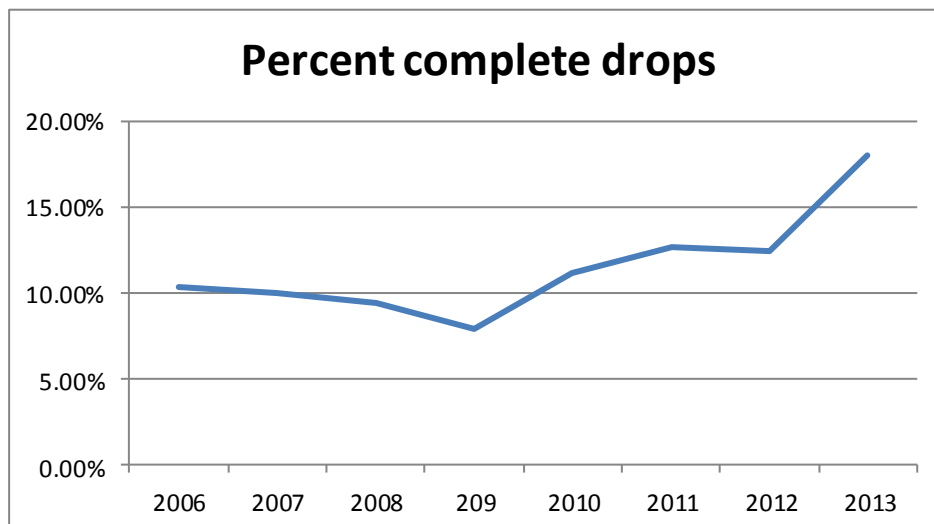
Chart V, *Headcount by Student Category, Fall quarter 2004 through Fall semester 2013*

Year	1 - First Time High School	2 - First Time Other	3-Continuing	4 - Returning	5 - Transfer	H - Dual Enrollment/PSEO	Total
2004	238	182	986	200	135	11	1,752
2005	212	159	930	200	131	11	1,643
2006	233	168	921	223	149	20	1,714
2007	213	143	973	236	163	14	1,742
2008	247	153	1,030	197	144	27	1,798
2009	241	175	1,301	263	189	31	2,200
2010	256	168	1,466	222	170	35	2,317
2011	199	146	1,334	216	139	43	2,077
2012	188	95	1,034	196	97	42	1,652
2013	173	67	823	107	88	28	1,286

- Headcount trends are displayed in Chart V by student entrance categories or UGA (Undergraduate Admission) Codes. Definitions for the codes are as follows: 1- Current High School Graduate First Time Enrolled as Undergraduate. 2- First Time Enrolled as Undergraduate/not current year high school graduate. 3- Continuous Enrollment. 4- Returning Student/previously enrolled, first term back. 5- Transfer from another Institution. H- Currently Enrolled in High School. Unknown- UGA code has not been assigned.

Chart VI, *Enrolled and Dropped Fall quarter 2006 through Fall semester 2013*

	2006	2007	2008	2009	2010	2011	2012	2013
Enrolled	1,714	1,742	1,798	2,200	2,317	2,077	1,652	1,288
Dropped	197	192	187	188	290	302	233	283
Total Enrolled	1,911	1,934	1,985	2,388	2,607	2,379	1,885	1,571
Percent complete drops	10.31%	9.93%	9.42%	7.87%	11.12%	12.69%	12.36%	18.01%



- The paired table and Chart VI display the number of unique students by year who completed applications, enrolled in classes, received schedules, and subsequently dropped enrollment for all classes by the add/drop date at the start of the term.
- In Fall 2013, 283 students enrolled and dropped all classes.

Chart VII, *Highlights of Fall 2013 Enrollment, 15th day report*

Belmont College 15th Day Census	Fall 2012		Fall 2013		Change Fall 2012 to Fall 2013	% Change Fall 2012 to 2013
	Enrollment	% Total	Enrollment	% Total		
Total Headcount	1,616		1,283		-333	-20.6%
F.T.E	1,210		973.7		-236	-19.5%
Full-time Credit Hours	13,776	75.93%	11,252	77.04%	-2,524	-18.3%
Part-time Credit Hours	4,367	24.07%	3,353	22.96%	-1014	-23%
Total Credit Hours	18,143		14,605		-3,537.5	-19.5%
Average Credit Hours per Student	11.23		11.37		0.14	1.3%
GENDER						
Total Females	1,077	66.6%	823	64.15%	-254	-23.6%
Total Males	539	33.4%	460	35.85%	-79	-14.7%
FULL-TIME / PART-TIME STATUS						
Full-time Students	1,026	63.5%	824	64.22%	-202	-19.7%
Part-time Students	590	36.5%	459	35.78%	-131	-22.2%
Females Full-time	658	40.7%	506	39.44%	-152	-23.1%
Females Part-time	419	25.9%	317	24.71%	-102	-24.3%
Males: Full-time	368	22.8%	318	24.79%	-50	-14%
Males Part-time	171	10.6%	142	11.07%	-29	-17%
AGE						
Enrolled in high school and College & under 18	27	1.7%	18	1.4%	-9	-33.3%
First time enrolled in college and under 18 years	13	0.8%	10	0.78%	-3	-23.1%
18-24	705	43.6%	680	53%	-25	-3.5%
25-30	294	18.2%	196	15.3%	-98	-33.3%
31-40	323	20.0%	230	17.9%	-93	-29%
40 and older	254	15.7%	159	12.4%	-95	-37.4%
RACE / ETHNICITY						
American Indian/Alaskan Native	6	0.4%	6	0.47%	0	0%
Asian/Pacific Islander/Native Hawaiian	8	0.5%	6	0.47%	-2	-25%
Black/Non-Hispanic	57	3.5%	40	3.12%	-17	-29.8%
Hispanic	2	0.1%	7	0.55%	5	250%
White/Non-Hispanic	1,478	91.5%	1,224	95.40%	-254	-17.2%
COUNTY of RESIDENCE						
Ohio counties						
Belmont	842	52.1%	703	54.8%	-139	-16.5%
Guernsey	111	6.9%	71	5.5%	-40	-36.0%
Harrison	170	10.5%	105	8.2%	-65	-38.2%
Jefferson	124	7.7%	76	5.9%	-48	-38.7%
Monroe	142	8.8%	110	8.6%	-32	-22.5%
Other Ohio counties	63	3.9%	68	5.3%	5	7.9%
West Virginia counties						
Brooke	9	0.6%	3	0.2%	-6	-66.7%
Hancock	0	0.0%	2	0.2%	2	200%
Marshall	67	4.1%	76	5.9%	9	13%
Ohio	83	5.1%	61	4.8%	-22	-26.5%
Tyler and Wetzel	2	0.1%	1	0.1%	-1	-50%
Outside Ohio and West Virginia	1	0.1%	6	0.5%	5	500%
County of residence not reported	2	0.1%	1	0.1%	-1	-50%

- Demographic characteristics of students are displayed in Chart VII. **The chart compares variables on the 15th day of the term in Fall 2012 and Fall 2013.**
- The average number of credit hours per student increased from 11.23 in Fall 2012 to 11.37 in Fall 2013. The average includes both part-time and full-time students.
- The increase in credit hours of enrollment per student in Fall 2013 explains the difference between the decrease in headcount, 20.6% on the fifteenth day in 2013, and the 19.5% decrease in credit hours on the fifteenth day in the same term.
- In Fall 2013, 53% of students were between the ages of 18 and 24. In the prior year, 43.6% of students were in the same age group.

Chart VIII, *Ten-year net loss/gain in academic programs, Fall 2004 through Fall 2013*

Associate Degree Programs	10-Year Net Loss/Gain		
	Headcount	Credit Hours	FTEs
Associate of Arts	26	236	15.73
Associate of Science	45	114	7.6
Business Programs			
Accounting	-33	-366	-24.4
Business Management	42	492	32.8
Office Administration	-10	-96	-6.4
Real Estate	-14	-124	-8.23
Small Business Admin & Entrepreneurship	10	87	5.8
Building Preservation/Restoration	-36	-465	-31
Computer and Information Technologies			
Cyber Security & Computer Forensics	16	162	10.8
Information Services - Library Paraprofessional	3	41	2.73
IT - Applications	-26	-290	-19.33
IT- Networking	2	76	5.07
IT - Engineering	-34	-404	-26.93
IT - Electronic Media	13	183	12.2
Engineering Programs			
Civil Engineering	-1	21	1.4
Industrial Electronics	0	9	0.6
Industrial Technology Programs			
Industrial Trades - HVAC	11	149	9.93
Industrial Trades - Welding Technology	-4	-75	-5
Medical and Nursing Technologies			
Registered Nursing	-10	-269	-17.93
Medical Assisting	-57	-210	-14
Practical Nursing	-30	-49	-3.27
Radiologic Technology	11	131	8.73
Mental Health and Early Childhood			
Mental Health	-28	-463	-30.87
Early Childhood Education	-46	-361	-24.07
Public Service Programs			
Criminal Justice	-81	-971	-64.73
Emergency Medical Services	10	123	8.2
Firefighter/Paramedic	-32	-186	-12.4

- Chart VIII displays the ten-year net gain or loss in enrollments in associate degree programs by headcount, credit hours, and FTEs.
- Overall, engineering and industrial technology programs show the most positive trends among all the program areas.
- Cyber Security & Computer Forensics was a new program in fall 2009. This program has increased in headcount, credit hours and FTEs since the program's beginning.
- Other associate degree programs showing positive trends include: Associate of Arts, Associate of Science, Business Administration (BAL), Small Business Administration and Entrepreneurship (SBA), Management, Small Business and Entrepreneurship, Information Services – Library (ILP) and (LIS), Computer Technology/Interactive Media/Graphics/Electronic Media, Radiologic Technology, and Emergency Medical Services.

Conclusions and Further Analysis

Further study of the presented data is necessary to make specific conclusions. Through the general data presented in this report, areas of concern are identified. However, more specific and further data collection is necessary to answer more specific questions of concern.

An enrollment summit is being planned whereby faculty and staff will collaborate on an extensive process of data analysis and the discovery of root causes for the enrollment decline.